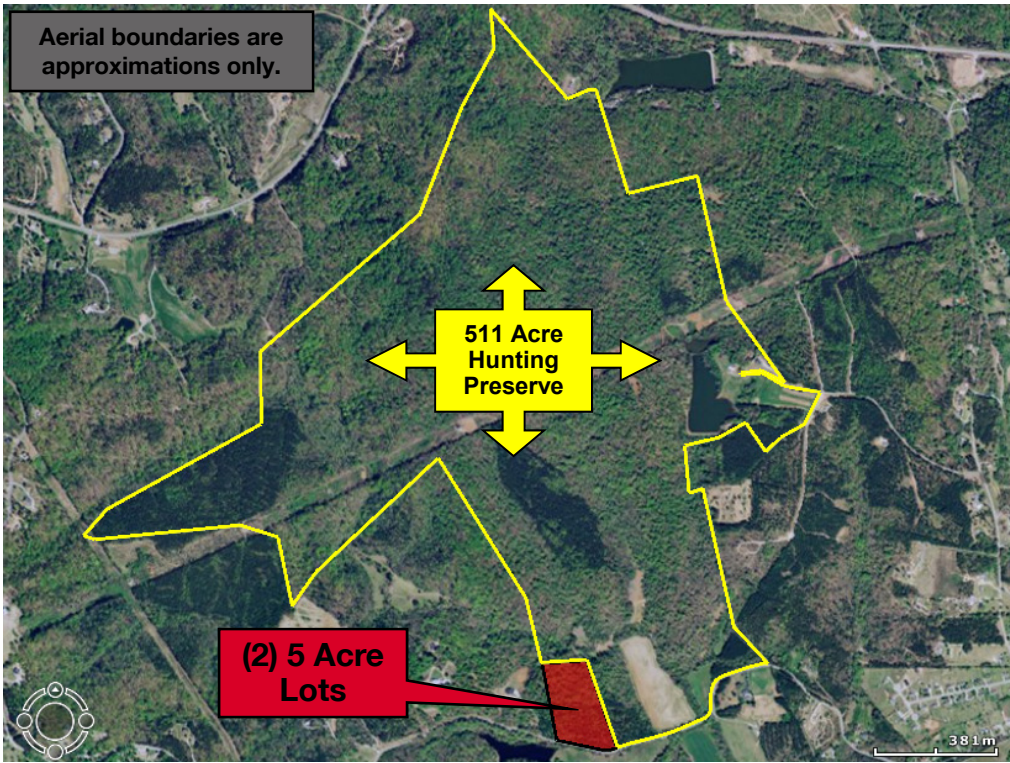


Aerial boundaries are approximations only.



Property Details

- Two adjacent 5 acre lots
- Each lot includes a 1/30th percent ownership in the 511 acre hunting preserve owned by the Burban Creek Homeowner's Association
- Both parcels connect to the 511 acre hunting preserve
- Excellent views of the surrounding Blue Ridge Mountains
- Maximum elevation of 1,075 feet
- Greenville County Tax Map #'s 0651020103502 & 0651020103501
- Sale Price: \$235,000.00

These two separate 5 acre wooded homesites include a 1/30th percent ownership in the 511 acre hunting preserve owned by the Burban Creek Homeowner's Association. Burban Creek is located 20 miles north of Greenville, SC and consists of beautiful rolling hills that create the headwaters of the Tyger River. Mature hardwoods make up the majority of the property along with several food plots and a utility line that stretches for approximately one mile through the middle of the tract. Burban Creek also includes a custom built cabin overlooking a 7 acre pond - both of which are included in the ownership stake and available for all Burban Creek owners to enjoy. An extensive interior road system provides easy access to the entire 511 acres and this road system connects with the two 5 acre lots. The lots offer incredible views of the surrounding Blue Ridge Mountains and a maximum elevation of 1,075 feet provides the perfect secluded setting for a home site. Excellent recreational opportunities are also available to all Burban Creek owners including deer hunting, bass fishing, and the world class turkey hunting that this area of South Carolina is known for.

This is an incredibly unique opportunity to enjoy 511 acres just a short 20 minute drive from downtown Greenville - all for the price of a 5 acre lot!! To find out more about Burban Creek visit the website at <http://burbancreekplantation.com>.

Plantation Homesites ■ Burban Creek Bailey Mill Road

Travelers Rest , South Carolina 29690



The information contained herein has been given to us by the owner of the property or other sources we deem reliable. We have no reason to doubt its accuracy, but we do not guarantee it. All information should be verified prior to purchase or lease.

Huff Creek Properties is a timber and recreational land division of **NAI Earle Furman, LLC**
Commercial Real Estate Services, Worldwide.

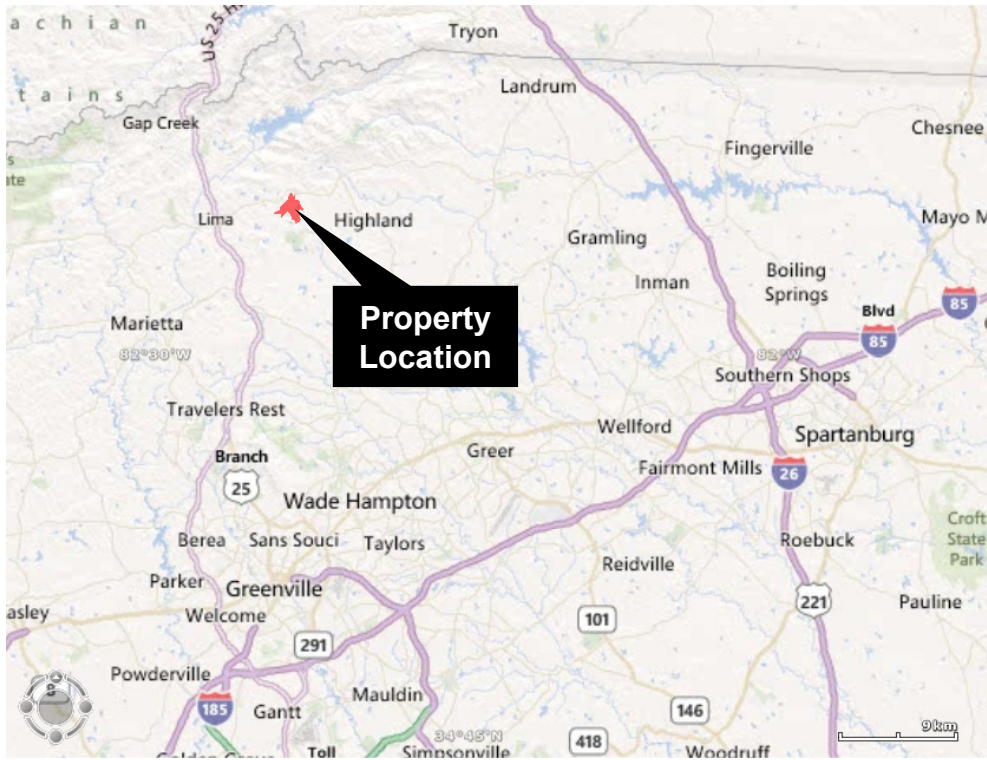
contact information

Rusty Hamrick
101 E. Washington Street
Suite 400
Greenville, SC 29601
www.naiearlefurman.com
tel 864 232 9040
fax 864 235 4300
rhamrick@naiearlefurman.com

Plantation Homesites ■ Burban Creek

Bailey Mill Road

Travelers Rest , South Carolina 29690

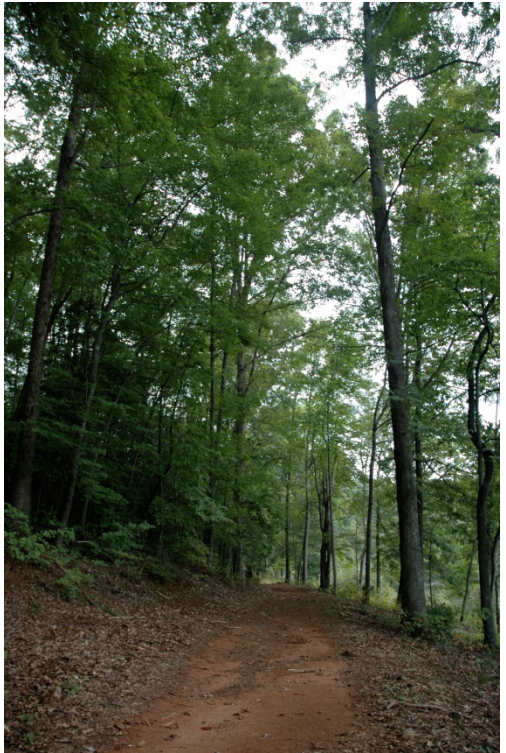




**Plantation Homesites ■ Burban Creek
Bailey Mill Road**
Travelers Rest , South Carolina 29690



(2) ±5 Acre Tracts
\$235,000.00
(\$110,000.00 & \$125,000.00)
Call Agent for Further Detail



The information contained herein has been given to us by the owner of the property or other sources we deem reliable. We have no reason to doubt its accuracy, but we do not guarantee it. All information should be verified prior to purchase or lease.

Huff Creek Properties is a timber and recreational land division of **NAI Earle Furman, LLC**
Commercial Real Estate Services, Worldwide.

contact information
Rusty Hamrick
101 E. Washington Street
Suite 400
Greenville, SC 29601
www.naiearlefurman.com
tel 864 232 9040
fax 864 235 4300
rhamrick@naiearlefurman.com